



Health in All Policies Trainers` Meeting

Participants and Institutions` backgrounds

Geneva, 24-26 March 2015

Contents

1. AMERICAS

a. INSTITUTE OF PUBLIC HEALTH, MEXICO.....	3
i. NELLY SALGADO.....	4
b. FLACSO, CHILE.....	5
i. ORIELLE SOLAR.....	5
c. CENTER FOR STUDIES, POLICIES AND INFORMATION ON SOCIAL DETERMINANTS ON HEALTH, FIOCRUZ, BRAZIL.....	6
i. PATRÍCIA TAVARES RIBEIRO.....	7
ii. GUSTAVO CORRÊA MATTA.....	7

2. EASTERN MEDITERANNEAN

a. AMERICAN UNIVERSITY OF BEIRUT, LEBANON.....	8
i. SAWSAN ABDULRAHIM.....	9
b. NATIONAL SCHOOL OF PUBLIC HEALTH, MOROCCO.....	10
i. Wafa CHEMAO EL Fihri.....	11
c. THE SOCIAL RESEARCH CENTRE OF THE AMERICAN UNIVERSITY IN CAIRO, EGYPT.....	12
i. HODA RASHAD.....	13

3. EUROPE

a. CENTRE FOR HEALTH DEVELOPMENT MURSKA SOBOTA, SLOVENIA.....	14
i. TATJANA BUZETI.....	15
b. IESE BUSINESS SCHOOL, UNIVERSITY OF NAVARRA (NETWORK AFFILIATION), SPAIN.....	16
i. LUCINDA CASH-GIBSON.....	17
ii. MAGDA ROSENMOLLER.....	17
c. DURHAM UNIVERSITY CENTRE FOR PUBLIC POLICY AND HEALTH, UNITED KINGDOM.....	18
i. PAULA FRANKLIN.....	19
d. MEMBER OF PARLIAMENT, RENNES, PRÉSIDENTE DU RÉSEAU NATIONAL DES VILLES-SANTÉ DE L'OMS, FRANCE.....	20
i. CHARLOTTE MARCHANDISE.....	21
e. STUDIORUM, SKOPJE, MACEDONIA.....	22

i.	NEDA MILEVSKA-KOSTOVA.....	23
f.	RÉSEAU FRANÇAIS DES VILLES-SANTÉ DE L'OMS, ÉCOLE DES HAUTES ÉTUDES EN SANTÉ PUBLIQUE, FRANCE.....	24
i.	JEANINE POMMIER.....	25
g.	INSTITUTE OF GLOBAL HEALTH, FACULTY OF MEDICINE, UNIVERSITY OF GENEVA, SWITZERLAND.....	26
i.	ASTRID STUCKELBERGER.....	27
h.	NATIONAL INSTITUTE FOR HEALTH AND WELFARE FINLAND.....	28
i.	TIMO STAHL.....	29
4.	<i>SUB-SAHARAN AFRICA</i>	
a.	DEPARTMENT OF HEALTH POLICY, ECONOMICS AND MANAGEMENT, SCHOOL OF PUBLIC HEALTH, NATIONAL UNIVERSITY OF RWANDA, RWANDA.....	31
i.	JAMES HUMUZA.....	31
b.	SCHOOL OF PUBLIC HEALTH, UNIVERSITY OF NAIROBI, KENYA.....	32
i.	JOSEPH K WANGOMBE.....	33
c.	MINISTRY OF HEALTH BOTSWANA.....	34
i.	SAMUEL KOLANE.....	35
5.	<i>WESTERN-PACIFIC</i>	
a.	COMMUNITY AND PUBLIC HEALTH CANTERBURY DISTRICT HEALTH BOARD, NEW ZELAND.....	36
i.	ANNA STEVENSON.....	37
b.	PUBLIC HEALTH AND CLINICAL SYSTEMS, DEPARTMENT OF HEALTH AND AGEING ADELAIDE, SOUTH AUSTRALIA, AUSTRALIA.....	38
i.	CARMEL WILLIAMS.....	39
c.	NATIONAL HEALTH DEVELOPMENT RESEARCH CENTRE BEIJING, CHINA.....	40
i.	HAO XIAONING.....	41
6.	<i>SOUTH-EAST ASIA</i>	
a.	NATIONAL HEALTH COMMISSION OFFICE, THAILAND.....	42
i.	NANOOT MATHURAPOTE.....	43
b.	LAL BAHADUR SHASTRI NATIONAL ACADEMY OF ADMINISTRATION (LBSNAA), INDIA.....	44
i.	PREM SINGH.....	45
c.	NATIONAL HEALTH SYSTEM RESOURCE CENTER, NEW DELHI, INDIA.....	46
i.	SANJIV KUMAR.....	47

1. AMERICAS

a. INSTITUTE OF PUBLIC HEALTH, MEXICO



INSP – Training programs

Instituto Nacional de Salud Pública

Masters and Doctoral programs in Public Health
Accreditations: CEPH, tropEd, ASPH, CONACYT

Full time Graduate Programs

Summer School

Started in 1996 currently offers over 40 courses during the summer.

e-learning program using TIC's

Automated self-directed courses and on-line tutored courses (Blackboard, Webex, Moodle)

INSP trains health and other sectors personnel at all levels through continuing education programs

Level	Content Areas	Participants
STRATEGIC	<ul style="list-style-type: none"> Leadership and management Planning Policy design Evaluation of Impact 	Secretaries of states and municipalities, assistant secretaries, department directors, directors of institutions, leaders of municipalities and delegations
TACTICAL	<ul style="list-style-type: none"> Planning and organization Program Design Performance Evaluation 	Directors of departments, assistant directors, department chiefs
OPERATIONAL	<ul style="list-style-type: none"> Execution of interventions Evaluation of results Medical continuous education focusing on health promotion Public Health training 	Primary care personnel: supervisors, physicians, nurses, health promoters, and interdisciplinary teams

PASPE 2015 20ª EDICIÓN
Programa de Actualización en Salud Pública y Epidemiología
Julio-Agosto

"Oferta Académica"

CURSO	DOCENTE
Salud en todas las políticas: Estrategias y retos para su implementación	Dr. Carlos A. Rodríguez Domínguez
...	...


A HiAP 40-hour course has already been included into the 2015 INSP Continuing Education Summer School Academic Offer
<http://www.paspeinsp.org.mx/>

Salud en todas las políticas: Estrategias y retos para su implementación



INSP can support HiAP capacity building

- Use INSP resources and networks to position the topic of HiAP on the academic agenda of higher education institutions in Latin America
- Develop and train human resources on HiAP
- Develop didactic material, online and classroom-based courses on HiAP
- Design a variety of knowledge-transfer strategies
- Organize live and online events (conference, seminars, webinars)



WWW.INSPE.MX

i. NELLY SALGADO

V. Nelly Salgado de Snyder is a senior professor and researcher at the Center for Health Systems Research of the National Institute of Public Health in Mexico (INSP). She is the former Director of the Global Health Program of the INSP. She has conducted numerous research projects, and participated as international consultant for government and non-governmental institutions as well as national and international organizations.



Dr. Salgado has published over 100 journal articles, books and book chapters on topics such as international migration, aging, poverty and social determinants of health. She has received funding from diverse sources for her research projects and has graduated more than 30 students at masters and doctorate levels. She is a member III of the Mexican National System of Researchers, member of Mexican Academy of Scientific Research, Fulbright Fellow, Fellow of the American Psychological Association, and a New Century Scholar of the Fulbright Program “Health in a Borderless World” lead by I. Kickbusch. She was on a sabbatical year during 2008 as a Balzan Fellow at the International Institute for Society and Health, University College London with Sir Michael Marmot where she developed academic resources for research and teaching social determinants of health in Latin America.

She has a BA and MA in Psychology from the National Autonomous University of Mexico (UNAM) and a PhD in Social Welfare from the University of California, Los Angeles. Her areas of interest are global health, social determinants of health, and health inequities.

b. FLACSO, CHILE

i. ORIELLE SOLAR HORMAZABAL,

Ms. Solar is MD, having a master's degree in Public health and epidemiology, master's degree in Biomedicine and Environmental Sciences, and is a specialist in occupational health. Between 2008 and 2010 she served as Chief Cabinet Secretary for Health, Ministry of Health in Chile, leading a variety of projects related to Social Determinants of Health, health inequalities and Health in All Policies.

Actually, her key areas of expertise include equity of access, health inequities, social determinants of health and intersectoral action and HiAP. Her work experience has focused on public health, health services and, in the field of occupational and environmental health, working in the area of health services (1992- 2000). Hence, she was serving as the director of the Department of Occupational and Environmental Pollution Public Health Institute (2000-2004).

Between 2004 and 2008, Dr. Solar worked at WHO-Geneva in the Department of Equity, Poverty and Social Determinants of Health (EIR), where she was a member of the technical secretariat of the Commission on Social Determinants of Health WHO. The main contributions to the Commission were the development of its theoretical framework, acting as technical coordinator of the knowledge network on employment conditions and inequality in health. She has been part of the working group on inter-sectoral policies and pro equity policy integration promoted by WHO since 2007. As part of this effort, she is currently serving as director of health, employment and equity Programme in Flacso, Chile.




c. CENTER FOR STUDIES, POLICIES AND INFORMATION ON SOCIAL DETERMINANTS ON HEALTH, FIOCRUZ, BRAZIL

Fiocruz: Main programs

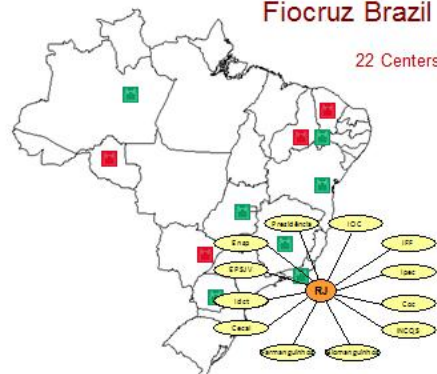


- Research and development
- Education and teaching
- Innovation and production
- Surveillance and reference services
- Health and medical care
- Environment and health promotion
- Information and communication
- History of science and health
- Planning and management





Fiocruz Brazil
22 Centers



- CURRENT SITES**
 - Rio de Janeiro
 - Belo Horizonte
 - Recife
 - Salvador
 - Manaus
 - Curitiba
 - Brasília
- FUTURE SITES**
 - Campo Grande
 - Fortaleza
 - Teresina
 - Porto Velho



portal e observatório sobre iniquidades em saúde

HOME NOTÍCIAS OPINIÕES ENTREVISTAS EXPERIÊNCIAS DOCUMENTOS NEWSLETTER SOBRE CONTATO

Observatório

sobre iniquidades em Saúde

apresentação

lista de indicadores:

- Tópicos
- Determinantes Sociais
- Situação da Saúde
- Atenção à saúde
- Indicadores

Redes Sociais

Últimas Publicações

14/02/13 | 10:02

É possível o bem estar em situações de extrema pobreza?

17/01/13 | 10:01

Editorial do Lancet recomenda o enfoque dos DSS para enfrentar os problemas de saúde nos EUA

14/02/13 | 10:01

Portal Fiocruz destaca lançamento do portal DSS Nordeste

Destques

É possível o bem estar em situações de extrema pobreza?

Por Gabriela Lamarca e Mario Vettore
06/02/13 | 10:02

As pesquisas têm documentado que os danos ao bem estar e à saúde física e mental podem ser causados pela pobreza e por eventos adversos da vida. Outros estudos têm mostrado que nem todos são afetados da mesma maneira. Em ambientes de pobreza e desvantagem social a forma como os pais agem com seus filhos pode influenciar nos níveis de resiliência e modular o risco à saúde. Relacionamentos fortes em famílias estruturadas aumentam sua os jovens se tornem

Editorial do Lancet recomenda o enfoque dos DSS para enfrentar os problemas de saúde nos EUA

Por Alberto Pellegrini Filho
11/02/13 | 10:01

Na edição de 19 de janeiro de 2013 a conceituada revista The Lancet publicou um editorial baseado em relatórios de agências americanas que mostram a desvantajosa situação de saúde do país em comparação com outros países desenvolvidos. Para diminuir esta desvantagem o editorial propõe um enfoque baseado nos determinantes sociais da saúde. Por que os americanos estão em nesta situação se

Lançamento do Portal DSS Nordeste

Por Alberto Pellegrini Filho
24/01/13 | 10:01

Acaba de ser lançado o primeiro portal regional sobre DSS vinculado a este nosso portal nacional. Trata-se do Portal DSS Nordeste, que assim como o Portal Nacional, publica notícias, dados, opiniões, entrevistas, experiências, resumos de artigos, documentos e outras matérias de interesse sobre os DSS referidos à região nordeste. O Portal DSS Nordeste pode ser acessado através do Portal DSS Brasil no menu do canto superior, à esquerda ou no endereço www.dssbr.org/portalnordeste.

Center for Studies, Policies and Information on SDH (CEPI-DSS/ENSP/FIOCRUZ)
Lines of action

- Observatory on Health Inequities: monitoring health inequities, follow-up and evaluation of interventions on SDH
- Training activities for managers in the diverse spheres of public administration;
- Research on SDH
- Promotion and participation on collaborative networks of researchers and managers;
- Information and communication about SDH to government, professionals and general public: Portal SDH (www.dssbr.org) and VHL SDH (<http://bvdsdss.iciict.fiocruz.br>)

i. PATRÍCIA TAVARES RIBEIRO

Ms Patricia Tavares Ribeiro graduated in Psychology from the State University of Rio de Janeiro, Brazil, with a PhD in Public Health (2007). She also holds academic background in Brazilian public health management, decentralization, regionalization, policy evaluation, health economics and equity, and territorial governance.

Since 1987, Ms. Ribeiro has been a researcher at the Department of Social Sciences of National School of Public Health, Oswaldo Cruz Foundation. She is also serving as a coordinator of the Center for Studies, Policies and Information on Social Determinants of Health at the National School of Public Health, Oswaldo Cruz Foundation, since 2014.

During her long career she has mostly gained experience in public sector on policies and strategies to promote decentralized management in health care at the federal and local levels.



ii. GUSTAVO CORRÊA MATTA

Gustavo Corrêa Matta is psychologist and he holds postgraduate degree in Medical Psychology and PhD in Public Health. He is currently serving as associate researcher in Public Health in the Health Planning and Administration Department at National School of Public Health, Oswaldo Cruz Foundation (ENSP/FIOCRUZ). Moreover, Mr. Matta is professor of International Health and Biopolitics in Public Health Postgraduate Program; Research Coordinator - The International Agencies and Health Education: A Case Study of World Health Organization and Education Coordinator of Post-graduation Course in Primary Health Care Management at ENSP/FIOCRUZ.



2. EASTERN MEDITERANNEAN

a. AMERICAN UNIVERSITY OF BEIRUT, LEBANON

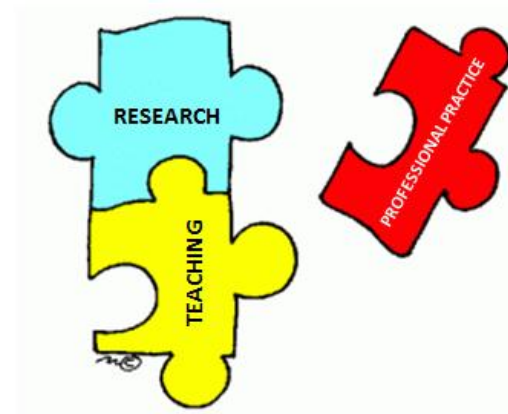
DEMOGRAPHIC CHARACTERISTICS	
STAFF	1
RESEARCH ASSISTANTS	13
AFFILIATES	3
PART TIME FACULTY MEMBERS	3
FULL-TIME FACULTY MEMBERS	6
TOTAL	26

HPCH MISSION

The mission of the Department of Health Promotion and Community Health is to promote community health through teaching, practice and evidence based research that addresses pressing health needs and informs policy. The teaching curriculum is geared towards preparing health promotion practitioners to analyze health determinants, design, implement as well as evaluate interventions and policies. The Department places strong emphasis on involving students in collaborative learning and real life experiences throughout their learning. These scholarly activities are guided by principles of social justice, ethics and community participation.

June 2012

What do we do?



Personal Areas of Research and Practice

- Rights of migrant workers and refugees
- Gender inequalities
- Social inequalities and health

i. SAWSAN ABDULRAHIM

Sawsan Abdulrahim is an Associate Professor in the Faculty of Health Sciences at the American University of Beirut. She obtained her PhD in Health Behavior and Health Education from the School of Public Health at the University of Michigan, Ann Arbor.

Abdulrahim's research focuses on social inequalities and health, the social and cultural meanings of subjective health evaluations, and the structural conditions that influence the wellbeing of immigrants and long-term refugees. In her attempts to produce knowledge on the social determinants of health in the Arab region, she has carried out analyses on population-level datasets in six Arab countries and conducted a representative survey study on attitudes and health in Lebanon. Her recent research interests have turned to registry data and the potential of utilizing routinely collected data to explore inequalities in chronic disease outcomes. She teaches courses in health promotion theory, forced migration and health, and global public health.



b. NATIONAL SCHOOL OF PUBLIC HEALTH, MOROCCO



b- PUBLIC KEY TARGETS NPHS Continuing training-face

→ nearly 2000 men / training day.

- Directors
- Hospital directors
- Top managers
- Epidemiologist
- Regional Directors
- Delegates of MOH
- Doctors
- hospital majors
- Midwives
- SSB managers
- NGO's Manager
- etc



C- Funding for the course NPHS work in cooperation with more than a ten countries from different continents of Europe (France, Belgium, Spain, Scotland), American (USA, Canada) Asian (Japan) and Africa (Tunisia, Senegal)

a- MAIN RELEVANT TRAINING COURSES / PROFESSIONAL IN THE LAST 2 YEARS

- 02/27/2015: Regional capacity building workshop for the prevention and fight against epidemics: Ebola cases
- 25/02/2015: Breastfeeding: Evidence, Strategy and Practice
- 04/12/2014 1st International Seminar on e-health (eHealth)
- 11/22/2014: International Support Course on Maternal and Child Health
- 10/10/2014: "Training Course on the formulation of health programs"
- 10/08/2014: Exploratory Seminar on "Gestational Diabetes in Morocco"
- 05/11/2014: Franco-Moroccan Seminar Gerontology "Challenges and limits of home care for the elderly"
- 02/10/2014 Training Course in Obstetric Ultrasound
- 06/18/2014 The Performance Based Financing (PBF), and reforms of health systems in countries in
- 03/27/2014 Return of Workshop Results Research Project FEMHealth
- 02/06/2014 Second course on "Support for Maternal and Child Health - Phase III
- 10/10/2014 "Training Course on the formulation of health programs"
- 10/08/2014: Exploratory Seminar on "Gestational Diabetes in Morocco"
- 05/11/2014: Franco-Moroccan Seminar Gerontology "Challenges and limits of home care for the elderly"

d. CHANNELS USED FOR ADVERTISING COURSES

Networks : The NPHS is a member of several research networks

Poster,, banners,leaflet, sprospectusTotem

- NPHS WEBSITE <http://ensp.sante.gov.ma>
- INTERNET TOOLS
- SATISFACTION SURVEYS ONLINE
- NPHS NEWS LETTER
- ASSOCIATION OF LAUREATES OF ENSP/ex INAS
- DIVISION COMMUNICATION MINISTRIES OF HEALTH
- THE SITE OF CONTINUOUS TRAINING
- CONTINUOUS TRAINING CATALOGUE ON LINE
- Network of Public Health Training and Research Institutes of the EMRO region (founding member);
- Network LINQED the Educational institutions LMI partners;
- Network in Sexual and Reproductive Health SRH.
- Network Health Systems and Chronic Diseases;
- French network of the organization's partner institutions Partnership for Development (PPD);
- Mediterranean Network and Middle East Public Health (EMPHINET)
- International network of epidemiology and public health training (TEPHINET)
- Network BDSP: Group of organisms that develops, since 1993, online information services for professionals in health and social sectors
- LinkedIn network;

i. Wafa CHEMAO EL FIHRI

Ms. Wafa Chemaou El Fihri is very involved in the development of her country in particular in the fields of health, quality, High Education (pedagogy) and in social mobilisation.

Upon obtaining her doctorate, she joined the Ministry of Health for 28 years, where she has held many positions of responsibility. Since 2000, she is a Professor in public health, responsible of the "Quality management in health and the course of changing Management ISA (high school attached to the head of government).

Ms. El Fihri supervised numerous researches and thesis in all areas of public health (since the management of quality and risk to the evaluation of health programming) such as cancer, HIV, Health reproduction "through the quality of university and medical andragogy" and the risk management in hospital in basic health services. She was also very involved in the design and implementation of health quality competition. It's an annual approach made mandatory by the UN at the Ministry of Health of Morocco. She still accompanies many medical and health institutions in implementation of the quality approach for their accreditation and quality certification, bot nationally and internationally.



- c. **THE SOCIAL RESEARCH CENTRE OF THE AMERICAN UNIVERSITY IN CAIRO,
EGYPT**

Health Equity and Reproductive Health

Thematic Focus: Health Equity

Target Audience: academics, senior administrators in reproductive health programs, program officers, public health specialists, demographers, development specialists

Participants (1997- 2013): 745 **From:** All Arab countries

Funding Source: UNFPA/ASRO (previously FORD, Helwett Foundation)

Latest Grant Budget: US\$ 163,514 for 2013

Advertising Channels: emails , SRC and AUC website

Research Methods for Guiding Policy and Evaluation

Thematic Focus: Population and Health

Target Audience: academics, government ministry personnel, NGO staff and program managers from International donor agencies working in development sectors.

Participants (1999-2014): 400 **From:** All Arab countries

Funding Source: Ford Foundation (previously: Wellcome Trust, Helwett Foundation)

Latest Grant Budget: US\$ 300,000 **For the period:** Jan 2011- Apr 2013.

Advertising Channels: emails , SRC and AUC website

Human Rights and Health Equity: Implications for Advocacy, Action and Governance

Thematic Focus: Health Equity and Human Rights

Target Audience: MOH personal, civil society actors, health advocates, right defenders, health planners, academics and public health monitor and evaluators.

Participants(2014): 20 **From:** Egypt

Funding Source: WHO/EMRO

Latest Grant Budget: US\$ 51,000 for 2014

Advertising Channels: AUC and SRC website - mails

i. HODA RASHAD

Professor Hoda Rashad is Director of the Social Research Center, American University in Cairo, Egypt. She holds a doctorate in population studies from the University of London.

Her current research focuses on social policies for development (particularly for poverty alleviation and health equity), gender issues, reproductive health, demographic analysis and evaluation of the impact of health interventions.

She serves as a member of a number of international advisory committees, including the WHO Commission on Ending Childhood Obesity, the Technical Advisory Committee to the Regional Director of WHO/EMRO, the Regional Technical Committee on Social Determinants of Health and the Regional External Advisory Panel for UNFPA Arab States Regional Office.

Previously, she was a Member of the Senate (El Shoura Council), one of the two parliamentary bodies in Egypt (2004 – 2011). She also served as a Commissioner on WHO's Commission on Social Determinants of Health (2005 to 2008).



3. EUROPE

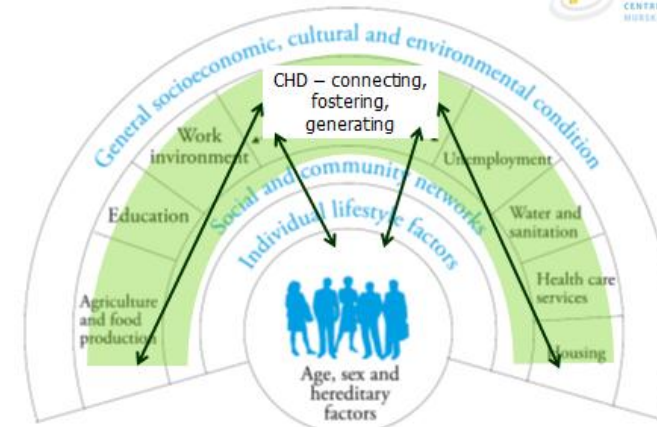
a. CENTRE FOR HEALTH DEVELOPMENT MURSKA SOBOTA, SLOVENIA



CHD team stands for



- **Vision:** innovative solution for equity
- **Mission:**
 - Identifying and addressing the real needs of population
 - Development and coordination of inter-structural and inter-institutional networks for well-being
 - Transfer of know-how and good practices on regional, national and international level
- **Values:** responsibility, justice, innovation, initiative, effectiveness



Summer School 2014 on "Vulnerability and cross-sectoral approaches to tackle it in prevention programs"

- Improving accessibility of prevention programs for vulnerable youth
- Strengthening parenting
- Improving accessibility of preventive programs for socially disadvantaged and disabled people
- People without health insurance and migrants
- Target group: primary health care and public health professionals, NGOs and other institutions working with vulnerable groups, members of WHO RHN and SEEHN
- Financed by MOH
- Communication: www, e-mail, WHO RHN and SEEHN, WHO country offices
- 60 participants



Summer school 2013 on "Equity focus in prevention programs"

- The role of universal policies and programs in addressing health inequalities
- Local health services delivered with equity focus
- Long term care and integrated services for elderly
- Group work on integrated health services with equity focus
- Target group: primary health care and public health professionals, members of WHO RHN and SEEHN
- Financed by MOH
- Communication: www, e-mail, WHO RHN and SEEHN, WHO country offices
- 90 participants



i. TATJANA BUZETI

Ms. Tatjana Buzeti holds MBA, Ba food science and technology. She is serving as a project manager and has more than 12 years' experience in public health as a field worker, researcher and policy advisor. She was head of Research and Development unit at the regional Institute of Public Health Murska Sobota for more than 4 years, and active researcher in the area of nutrition, health promotion and public health. As a program manager of pilot program Mura she worked close together with the Ministry of Health of Republic of Slovenia (MOH) and WHO European Office for Investment for Health and Development in Venice. She was a member of programming board for regional development program 2007- 2013 and involved into preparation of the Operational program 2014- 2020 on the national level.

Ms Buzeti's mayor areas of work represent development and implementation of investment for health approach, development of cross-sectoral approaches and mechanisms in health promotion and disease prevention, nutrition and physical activity programs, health inequalities and socio-economic determinants of health. From 2010 to 2013 she worked at the MOH in the area of public health and run different dialogues with decision makers especially on social determinants of health and health inequalities. She was also head of WHO CC for capacity building in cross- sectoral investment for health from 2009 to 2013.

She is currently a member of steering committee of WHO RHN, chair of organising committee of annual summer schools on health inequalities in Slovenia and national focal point for health inequalities. She has been co-author of different documents including "Positioning health equity and the social determinants of health on the regional development agenda" (2014), "Health Inequalities in Slovenia" (2011), Findings of the WHO Rapid Appraisal Mission on the Social Determinants of Health, Executive Summary" (2010), "Investment for health and development in Slovenia-Programme Mura" (2008) and "Health Promotion Strategy and Action Plan for Tackling Health Inequalities in the Pomurje Region" (2005).



b. IESE BUSINESS SCHOOL, UNIVERSITY OF NAVARRA (NETWORK AFFILIATION), SPAIN

c. CRHIM – Center for Research in Healthcare Innovation Management

- **CHRIM (IESE /Accenture) Collaboration-** brings together faculty and experts, building on **IESE's insights in health management (>30yrs)** + Accentures wide experience in improving performance in the industry.
- **IESE- CHRIM: Research, Teaching Activities and develops tools to:**
 - Facilitate uptake of innovation in **technology + management practices across entire health care value chain.**
 - Increase **managerial knowledge + capacity enabling actors to address challenges, realise opportunities and deliver effective, affordable healthcare.**
- Contribute to **shaping real practice and policy** throughout its **large network on public, private actors in Global North and South.**

IESE Business School

Mission

IESE is committed to development of leaders who aspire to have a positive, deep and lasting impact on people, firms and society through their professionalism, integrity and spirit of service.

Guiding Principles

IESE was founded in 1958 on following principles:

- General Management Perspective
- Relevance & Rigor
- International Character
- Human and Ethical Values
- Transformational Impact



2 in the World:
Executive Education Open Programs
(FT, 2013 Rank)

#3 in the World:
Executive Education Customised Programs
(FT, 2013 Rank)

#7 in the World:
Global Full Time MBA Program (FT, 2013 Rank)




1) Barcelona North/South Campus (*IESE-CRHIM)
2) Madrid Campus

3) NY Campus

Academic Directors

Magda Rosenmöller
Senior Lecturer of Production, Technology and Operations Management
Contact

Jaime Ribera Segura
Professor of Production, Technology and Operations Management
Contact

Global Activites and Sites

IESE - CRHIM Research Projects

- **1980s:** Built managerial capabilities in different regional governments of Spain.
- **>1990s:** Collaboration with EU: EUs Phare Program (TA health-sector reform in CEE) & support the EU enlargement process. Advise (e.g. Spanish Parliament's Commission / IPSS (Peruvian Social Security), World Bank and work in India, China and Africa (SBS Kenya)).
- **Regular advice to European Commission's DG Sanco and DG Research:** Evaluation of EU research projects (FP5-7, PHP), Innovative Medicine Initiative (IMI): Socio Economic Evaluation and First Interim evaluation; and design of research to support innovation in medical tech are
- **Consulting work:** Brookings Institution, Bill and Melinda Gates Foundation, HIMSS, World Bar Grameren Foundation, Pharma companies
- **Teaching activities at IESE (MBA and health Executive programs);** China (CEIBS); Latin America (IAE, IEEM, IDE); Africa (SBS, LBS, etc.) and EU (LBS, LSHTM, MHH, Uni of Maastricht, SMBS, U ISGlobal, MCI) + planning capacity building in health sector business creation.
- **Research (including several health-related EU funded Research Projects):** *Project INTEGRATE AdHopHTA – Alfred – Health Research for Europe - Europe for Patients – SDH-Net*



FP7: SDH-Net with GIZ (2011-2015):
Building sustainable capacity for research for health and its social determinants in LMIC.



i. MAGDALENE ROSENMÖLLER

Ms. Magda Rosenmoller holds a Ph.D. in Health Policy (University of London), a Medical Doctor (University Louis Pasteur, Strasbourg, France), and an MBA from IESE. She teaches the MBA elective on health management at IESE, and in executive education in Europe, Asia, Africa and Latin American business schools. Her areas of interests are health management, managing innovation in health care, European health and research policies and global health issues.

She served as senior expert in different assignments for the European Commission (health research and policy), the European Parliament and ECDC, such as rapporteur on the Role of Universities in Regional Development (2013), the Innovative Medicine Initiative (IMI): first interim evaluation (2011) and earlier, the social economic impact analysis (2007). Scientific Coordination of FP7: Project Integrate, SDH-Net, and FP6: Europe 4 Patients, and Health Research for Europe.



ii. LUCINDA CASH-GIBSON

Ms. Lucinda Cash-Gibson holds BSc and MSc university degrees. She is serving as a Researcher at IESE-CRHIM and she is involved in the Scientific Coordination of two European Commission projects (SDH-Net and Project INTEGRATE) collaborating with 20 institutions across Africa, Europe and Latin America.

Previously, she has worked in the UK National Health Service on Service Improvement projects, and in Imperial College London and UCL, working on a range of Public Health and Health Service Research topics.



C. DURHAM UNIVERSITY CENTRE FOR PUBLIC POLICY AND HEALTH, UNITED KINGDOM

Centre for Public Policy and Health

- Established in 2002
- Located in the School of Medicine, Pharmacy and Health, Durham University
- Member of the Wolfson Research Institute for Health and Wellbeing, Durham University
- Designated a WHO Collaborating Centre on Complex Health Systems, Research Knowledge and Action in 2014
- Visit our website for more information on the MSc and Leadership programmes: www.dur.ac.uk/public.health



Centre for Public Policy and Health

MSc in Public Policy and Global Health

- Emphasis is on health policy development, critique and implementation
- International students
- Informed by HiAP principles
- Aimed at people who wish to pursue a career in public health management, policy development, research or advocacy
- Core Modules:
 - Global health and governance
 - Public policy, health and health inequalities
 - Leadership, change management and decision-making in the health system
 - Comparative health systems
 - Evidence informed policy and practice – thematic focus on obesity
 - Research methods: quantitative and qualitative

Leading Health and Wellbeing Programme

- Designed to support those in senior public health roles
- Explores emerging policy developments and strengthened role of local government
- Brings together partner organisations to share understanding and relevant experience
- Develops partnership and leadership skills



Centre for Public Policy and Health

CPPH Objectives

- To carry out research that is of international, national and regional significance in the areas of global health policy and governance, leadership and management and public policy and health
- To strengthen the evidence base in respect of public policy in the areas of health and wellbeing and its implementation
- To develop appropriate postgraduate teaching programmes in public policy and global health, and continuing professional development courses in leadership and transformational change drawing on our research where appropriate



Centre for Public Policy and Health

Funding

- *MSc PP&GH* – self funded fees; scholarships, eg Chevening (students from Commonwealth countries); USAID (US students)
- *Leadership programme* - self-funded or through employers

Channels to advertise courses

- *MSc PP&GH* – course website; masters courses websites, including Find a Masters, Prospects, Hot Courses
- *Leadership programme* – programme website; e-mailing lists circulated to stakeholder groups

Stay in touch tool/community of practice post-training

- *MSc PP&GH* – Durham University Alumni Relations Office (DARO) www.durham.ac.uk/alumni
- *Leadership programme* – alumni group under discussion; participants' email addresses circulated and encouraged to stay in touch



Centre for Public Policy and Health

iii. PAULA FRANKLIN

Dr Paula Franklin is an international Research Fellow at the Centre for Public Policy and Health, Durham University, UK. Her current research study explores stakeholder experiences of governance in the forming of European public health strategies by the European Commission Directorate General for Health and Consumers (DG SANCO) and World Health Organisation Europe.

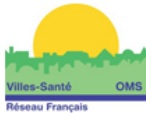
Dr Franklin's previous assignments include drafting patient safety guidelines for hospitals at a European NGO (European Health Management Association, Brussels), and researching leadership and management approaches in the UK National Health Services hospitals (Royal Holloway, University of London, UK). Her doctoral study in Sociology (University of Surrey Roehampton, London, UK) explored women's experiences of self-defence training and urban space.

In her native country Finland, she worked at the Ministry of Education, while completing an MA in Adult Education at the University of Helsinki. From September 2015 Paula will be a Research Officer in the European Commission's Institute for Gender Equality (EIGE) in Vilnius, Lithuania.

The over-arching themes of her interest and expertise include gender and well-being, political determinants of health, supranational public health policies, governance and leadership.




d. MEMBER OF PARLIAMENT, RENNES, PRÉSIDENTE DU RÉSEAU NATIONAL DES VILLES-SANTÉ DE L'OMS, FRANCE



Health in all policies- French WHO Healthy City Network.

Charlotte Marchandise,
Political Chair,

Geneva, March 2015



RESEAU VILLES-SANTÉ DE L'OMS



Making HiAP happen

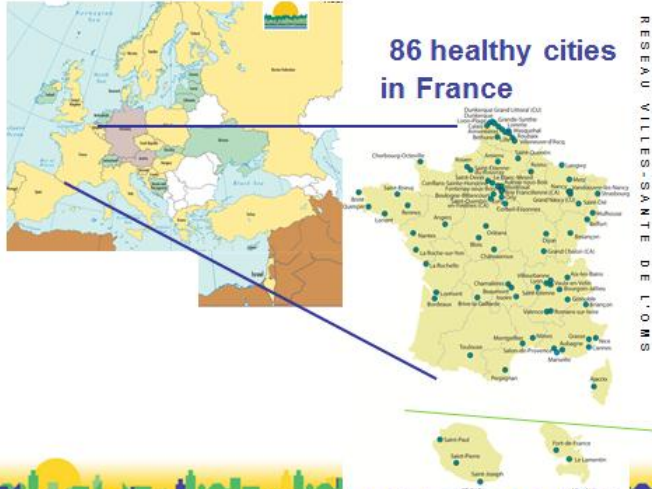
National Seminars

Regional meetings including a topic (recently HEAT - WHO Health Economic Assessment Tool for walking and cycling)


For new politicians (and people who can't attend a training event) – a package of information (“plaidoyer” for environments positive for health (with short films, slides, leaflets..)




RESEAU VILLES-SANTÉ DE L'OMS



86 healthy cities in France






RESEAU VILLES-SANTÉ DE L'OMS



Publications and Briefing papers for local authorities


4 pages briefing papers:

- Tobacco, local authorities as exemplary employers
- Impact of changes to school hours on children's health
- Quality of Air (end 2015)

Active Mobility and Health – in English, French and Russian

www.villes-sante.com



RESEAU VILLES-SANTÉ DE L'OMS

i. CHARLOTTE MARCHANDISE

After a degree in applied economics, Ms. Charlotte Marchandise has been working as coordinator, communication officer and project manager in the corporate world and social and environmental NGO's. With the overcoming of the Internet, she became webmaster and community manager, always focusing on how this tool could be accessible, and even developed by the citizens themselves. She strongly believes that there is a huge lever to promote health through the smart cities.

Later, she graduated in pedagogy engineering, and she has been training groups in various field and very different publics (migrants, doctors, volunteers, students, seniors...) as a consultant. Meanwhile she volunteered! She founded an alternative middle school based on ecological and creative values. She also created a full training for doulas in France, on how to promote and provide to parents continuous, physical, emotional and educational support from pregnancy to the postpartum period. Furthermore, Ms. Marchandise contributed to develop a network of doulas around Europe to share experiences, knowledge, improve conditions around childbirth.

Since April 2014, she is a deputy mayor in charge of Health and Environment in Rennes, France, and she has been elected chair of Healthy Cities in France in September 2014. She seeks to share the values of healthy cities and Health in All Policies in her town and also at a national level, to lobby key actors in others sectors.



e. STUDIORUM, SKOPJE, MACEDONIA

Center for Regional Policy Research and Cooperation

studiorum

Organisational Profile

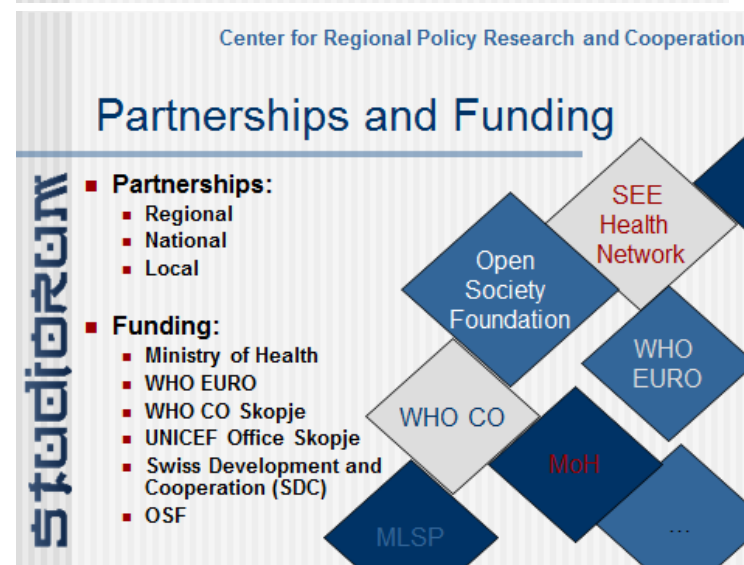
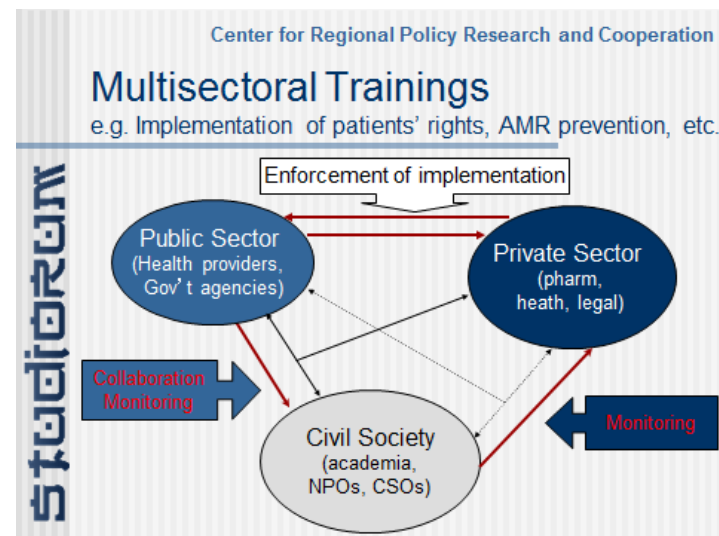
- Established in 2002
- Think tank working on health policy and research
- Area: Regional, National and Local
- Focus: health & human rights
- Expertise: research, policy analysis, training, capacity building

Center for Regional Policy Research and Cooperation

Focus of Trainings



Level of skills development



i. NEDA MILEVSKA-KOSTOVA

Neda Milevska Kostova; (1975), has been serving as an Executive Director of health policy think tank Studiorum, Macedonia, 2007 to date. Since 2010 she has been Assistant Professor of Policy and Management at the University American College Skopje. Between 2002 and 2007 she held the position of Program Director of the Department of Public Health at Studiorum, and of Executive Editor of the Journal for European Issues “Evrodijalog”. She began her career in 2000 as Program Manager at the Department of Pharmacogenomics, Cancer Research Hospital “Ganken”, Tokyo, Japan.

Mrs. Milevska Kostova holds MSc degree in Functional Pharmaceutics from the University of Tokyo, Tokyo, Japan, and Master of Public Policy and Management degree from the Graduate School of Policy and International Affairs (GSPIA), University of Pittsburgh, PA, USA. She has completed Executive Education at the Harvard University, Kennedy School of Government. Currently she is completing PhD degree at the School of Health and Related Research (SchARR), University of Sheffield, UK.

She has extended experience in health policy research and analysis, effective policy writing and advocacy.




f. RÉSEAU FRANÇAIS DES VILLES-SANTÉ DE L'OMS, ÉCOLE DES HAUTES ÉTUDES EN SANTÉ PUBLIQUE, FRANCE



An internationally oriented school of public health

Four missions

- Provide **training** for senior managers and inspectors in the health and welfare services
- Provide **higher education** in public health in close partnership with other institutions
- Contribute to **public health research**
- Promote **international relations** in particular through exchanges with similar educational institutions.



13 training programs for healthcare professionals

- Health Care Institution Management Program
- Social Care Institution Management Program
- Hospital Nursing Administration Program
- Health Care Institution Administration Program
- Public Health and Social Welfare Inspector Program
- Hospital Engineer Program
- Public Health Medical Inspector Program
- Public Health Pharmacist Inspector Program
- School Doctor Program
- Regional Occupational Doctor Program
- Public Health Engineering Manager Program
- Environmental Health Administration Program
- Health technician Program



An international higher education

Masters

- Master of Public Health (MPH)
- Europubhealth: European Public Health Masters course of study
- Master in Analysis and Management of Health
- Master in Law, Health and Ethics
- Master in Health Education for Children, Adolescents and Young Adults
- Master in Health Care Assessment
- Master in Youth: Policies and Care
- Master in Administration of Public Health Actions and Programmes
- Master in Public Health and Environmental Risks
- Master in Public Health: Social Sciences Pathway
- Master in Clinical Nursing Sciences
- Master in Disability and Social Participation

i. JEANINE POMMIER

Jeanine Pommier, MD, PhD, is professor at the French School of Public Health and deputy of the department of Social and Human sciences. She is a researcher at the Research Center on Policy action in Europe. She is the administrative vice-president of the International Union for Health Promotion and Education (IUHPE), a large international NGO for professionals and researchers working in the field of health promotion.

She is currently assessing the integration of public policies to reduce health disparities in the French public health system and developing a research project in Knowledge transfer in order to develop better informed public health policy in France.

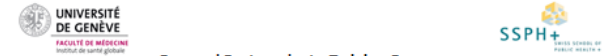


g. INSTITUTE OF GLOBAL HEALTH, FACULTY OF MEDICINE, UNIVERSITY OF GENEVA, SWITZERLAND



Institute of Global Health

- Founded in January 2014
- Formerly called the Institute of Social and Preventive Medicine founded more than 20 years ago.
- This change was decided in the context of a more general policy to anchor the University of Geneva in the line of reaching excellence at the international level of Geneva and in the context of globalization.
- Among other Faculties, the Faculty of Medicine decided to create the Global Health Institute to enhance and reinforce the links of Geneva International and its numerous international organizations working on health.
- Located in the facilities of Campus Biotech shared by the University of Geneva and Ecole Polytechnique Fédérale de Lausanne (EPFL).

Pre- and Post-graduate Training Programmes

Pre-graduate Training Programmes

- Medical students in English
- Community immersion
 - innovative training in the field during the 2nd and 3rd year of study
- Optional courses
 - in different basic, different language and skills


Postgraduate Continuous Education Programmes

- Master of advanced studies in Public Health in French, 3 years - local, regional, national and international students
- Certificate of advanced studies in Health Promotion and Community Health in French, 3 year - local and regional students
- Certificate of advanced studies in Discrimination, Health and Human Rights in French

NEW! launched in 2012

Postgraduate Training Programmes

- PhD program in Global Health in English
- Spring School of Global Health in English for PhD and Master students, open for other participants
- Master of Science in Global Health in English



Launched in 2012 ...Summer Schools

"Global Health and Human Rights" in English

Open to Bachelor, Master students and professionals from around the world

Other:
International Training Programmes



Other Training Programmes

WHO call: Public Health training program targeting Africa

- UNIGE selected with University of Cape Town among about 50 proposals in 2009
- **French speaking Africa** → attributed to the University of Geneva in partnership with Universities and Ministries of Health of ten French-speaking African countries: MoU signed between UNIGE and WHO



OBJECTIVE

To train health professionals from 10 French-speaking African countries:

- in public health with focus on health workforce development
- Over an electronic platform - based on the Geneva curriculum in Public Health (GSPH)
- in close partnership with African Universities, local Public Health authorities, and WHO country offices.

HOW?

For each topic specific educational material was developed

case studies, readings, exercises, self-evaluation modules, assessment tools, assignments, etc.)

Working/teaching method: consistent with adult learning:

- Participatory approach
- Exchange of experiences in different contexts and countries
- Socratic teaching
- Practicality



Winter 2012-13 implementation of training activities with 10 Modules:

Road accidents, maternal and child health, HIV/AIDS, Mental health, Food and malnutrition, human resource management, infectious diseases, essential drugs, chronic diseases, health promotion




Courtesy: WHO/UNICEF

Professor Caporin signing the book to launch the Master Degree Programme with a focus on Public Health Development in Francophone Africa

OTHER INTERNATIONAL TRAINING

Online/residential Training over 6 months (2009 – 2012)


- WHO International Health Regulation Implementation Course
 - 3 courses delivered through distance learning and residential
 - accreditation from 3 Universities + WHO
 - International participants from around the world
 - WHO staff, IHR focal point, MoH, Epidemic country leader, Lawyers, Medical doctors, etc



Mode of delivery and instructional techniques

210 hours of content delivered through blended learning over a 6-month period, including:

- 12 weeks distance-learning with tutoring
- 19 September to 11 December 2011: 100 hours
- 17 weeks for individual and group work
- 12 December 2011 to 29 January 2012: 30 hours
- 2 weeks face-to-face re-gathering session in Annecy, France 30 January to 10 February 2012: 70 hours
- 2 weeks to finalize participant Portfolio: 11 to 26 February 2012: 50 hours



Course objectives

Strengthen critical human resources engaged to set-up and manage systems for ensuring global public health under the IHR implementation framework.

Develop communication capacities for efficient international collaboration.

Operational objectives in brief:

From their work stations, participants will be able to:

- Communicate with WHO as set out in the IHR
- Collect, analyze and disseminate critical public health information
- Lead or interact with staff responsible for carrying out the assessment
- Lead or interact with sectors/staff engaged in the strengthening/acceptation of core public health capacities
- Trigger appropriate legislative, regulatory, and organizational reforms
- Plan, coordinate, monitor and assess IHR implementation
- Manage an emergency situation effectively
- Assess national vulnerability in health systems for effective IHR implementation
- Assess all actions in light of other areas of international law
- Train relevant professionals in IHR implementation

i. ASTRID STUCKELBERGER

Astrid Stuckelberger is a scientist, senior lecturer and writer at the Institute of Global Health of the Faculty of Medicine of the University of Geneva and of Lausanne. She is also a professor at the University of Applied Science. She holds a Privat-Dozent of the Medical Faculty, a PhD in Population Health, an advanced Masters of Science in International Health with WHO and a Master in Psychology and Education Science.

Dr Stuckelberger has been teaching, developing international curricula and conducting global and national research and policy mandates since more than 20 years. She co-directed a Swiss National Research Programme (1991-2000), which served as the basis for national policies and training on different issues. Her research interests and teaching area cover primary, secondary and tertiary analysis of population and personalized medicine. Other areas of research and expertise include mental health, health systems, International Health Regulation, life course, gender issues, social determinants of health, right- and evidence-based policies, human rights and ethics training in global health. She developed and leads the Global Health and Human Rights Summer School running since 3 years ago.

She is regularly called to work or collaborate with different international organisations on global health issues for training and policy. With WHO, she conducted a review of international mental health policies, she co-designed and tutored the 3 WHO International Health Regulation Implementation courses, contributed to the International Research Ethics Training Manual. Since a decade, the European Commission asked her to join the expert pool of research evaluators and ethics reviewer for diverse calls. As a writer, she published 10 books, and more than 170 scientific articles, policy papers, governmental, European Commission or UN reports.



h. NATIONAL INSTITUTE FOR HEALTH AND WELFARE FINLAND

What THL does

- THL studies population health and welfare, effectiveness of health and welfare policies and services, environmental health as well as social problems. THL is one of the top research agencies in Finland.
- THL collects and produces information on the state of health care and welfare, on social and health services as well as on diseases and their treatment.



What THL does

- THL develops and guides social and health care and provides expert assistance to decision-makers and service providers in Finland and abroad. THL's expertise draws on high-quality research, extensive statistics and registers, and knowledge of our interest groups' needs.
- THL guides and provides government services in the field of social and health care and is responsible for official duties under its purview.



Operational priorities

1. Sustainable welfare state in changing demographics
2. Prevention of inequality and social exclusion
3. Prevention of major chronic diseases
4. Preparedness for health threats
5. A safe living environment
6. Support for restructuring of the service system



THL's interest groups



ii. TIMO STAHL

Mr. Stahl works as a chief specialist at the National Institute for Health and Welfare (THL) Finland. His educational background comes from sport (Master of Science) and health sciences (Doctor of Philosophy - health education, and Adjunct professor - health promotion). He also holds teacher's pedagogical qualification.

At the moment his main task is to manage a national Benchmarking System for Local Health Promotion Capacity. The data is collected from all municipalities from the fields of primary health care, health-enhancing physical activity, comprehensive schools and management of the municipality. Collected data are analysed, interpreted and presented in the interactive, dynamic web reports in the internet (www.thl.fi/teaviisari). For this duty, he works closely with Ministry of Health and Social Affairs, Ministry of Education and Culture and the National Board of Education.

He has a long history working with HiAP. He was one of the persons responsible for the preparation and implementation of the Health in All Policies project that was the main public health theme of Finland during the Finnish European Union presidency in 2006. He was the first editor of the book Health in All Policies – prospects and potentials (2006). He worked for two years (in 2011-2013) at WHO HQ where his main responsibility was organizing the 8th Global Conference on Health Promotion where HiAP was the main theme.

He has six years' experience of management tasks of the organization being as a head of the unit and director of department. At the moment, he is serving as a deputy head of a unit and a team leader.



4. SUB-SAHARAN AFRICA

a. DEPARTMENT OF HEALTH POLICY, ECONOMICS AND MANAGEMENT, SCHOOL OF PUBLIC HEALTH, NATIONAL UNIVERSITY OF RWANDA, RWANDA

UNIVERSITY OF RWANDA-COLLEGE OF MEDICINE AND HEALTH SCIENCES/SCHOOL OF PUBLIC HEALTHA: Academic program offered

▪ Main Programs:

1. Master's degree in Public Health (MPH) (Evening program)
2. Master of Science in Epidemiology (MSc Epi) (Evening Program)
3. Master of Field Epidemiology and Laboratory Training Program (FELTP)
4. Master of Hospital and Healthcare Administration (MHA)
5. Master's of Philosophy (MPhil)
6. Doctorate of Philosophy (PhD)

▪ Upcoming Program:

1. Master of Science in Health Financing & Economics (HFEM)
2. Master of Global Health
3. Master of Disaster Management

Centers of Excellence at SPH

- 4 centers of Excellence
 - Center of Excellence for Health System Strengthening
 - Center of Excellence for Programmatic Management of TB Drug Resistance
 - 4 International Courses (Infection controls & Laboratory Management): *Ethiopia, Kenya, Uganda, Tanzania, Somalia, Liberia, South Sudan, Zambia, Zimbabwe, RD Congo, Malawi, Djibouti...*
 - Regional Center of Excellence on Health Supply Chain Management
 - Center of Excellence of Health Informatics

Academic program offered Con'd

• Programmes outcomes:

- *Mutatis mutandis: health promotion, diseases prevention, supervision of clinical and health provisions, leadership in public health, epidemiological surveillance (at all levels), applied epidemiology, public health laboratory practice, operational research, hospital and healthcare administration, planning, monitoring evaluation, social marketing...*

Research, consultancy, and Community Service

- Operation researches and consultancies
- MOH Technical Working Groups:
 - Human Resources for Health, Decentralization, Medical Education & Research, Financing tracking, Negotiation with partners...
- Membership of Editorial Board of Journals:
 - Rwanda Journal (NUR: Health Sciences Section), Rwanda Medical Journal.
- Membership of International Organizations / Alliances / Consortia:
 - WHO, Global Fund, UN, etc.

i. JAMES HUMUZA

James Humuza worked for World Bank as consultant for two years before joining the University of Rwanda- College of Medicine and Health Sciences/ School of Public Health as an assistant lecturer in 2009. Currently, James is the head of department for Health Policy, Economics, and Management after serving as Vice Dean.

He is currently working on two research projects: (1) Community PBF impact evaluation, (2) Effectiveness of PMTCT program in Rwanda, (3) a research on “National diffusion of a policy: the experience of Rwanda with exploiting, extending, and sustaining Performance Based Financing for better health outcomes (2006-2014)” with support from WHO. James has co-led the design of several health programs and implemented some.

Dr. Humuza is considered an expert for the World Health Organization (Afro) on Social Determinants of Health, and has developed a case study and made presentation at WHO Geneva on the scale of health inequalities in Africa.

Mr. James holds a degree in medicine and surgery from former National University of Rwanda, faculty of medicine; Masters degree from Brandies University in Boston, USA (majoring in health policy and financing); and is currently pursuing PhD in Health Economics, from Health Economics Unit, University of Cape Town, South Africa.





b. SCHOOL OF PUBLIC HEALTH, UNIVERSITY OF NAIROBI, KENYA

SCHOOL OF PUBLIC HEALTH, UNIVERSITY OF NAIROBI

SPH Programs are organized in four thematic areas and Centers:

Epidemiology and Biostatistics

Health Care System and Policy Development

Disease Prevention, Control & Health Promotion

Community Health Sciences

Centre for HIV prevention and Research

Health Care System and Policy Development- which I lead works under five thematic subheads heads:

- Health Planning and Policy Development
- Health Services Administration & Evaluation
- Primary Health Care
- Health Economics
- International Health

Summary current SDH Activity profile for the SPH

- SDH-Net Membership involves training inputs with standing courses on health economics and health systems planning and management; SDH-Net project sponsored by EU-FP7 (2011-2015)
- SPH involved research, policy and programming for the Regional Centre on Abandonment of FGM
- Continuing foundation and refresher training of HIV field personnel by the Centre for HIV prevention and Research (CHIVR)
- SPH is part of the ongoing intersectoral Dialogue on SDH under the leadership of MOH.

Com. Channels and continuation of SDH activities

- Intra-university net
- University of Nairobi internet site
- Membership of expert panels of MOH and Civil Society
- National press
- Many activities are sustained by donor funding – eg. MOH, USAID, EU, NHI

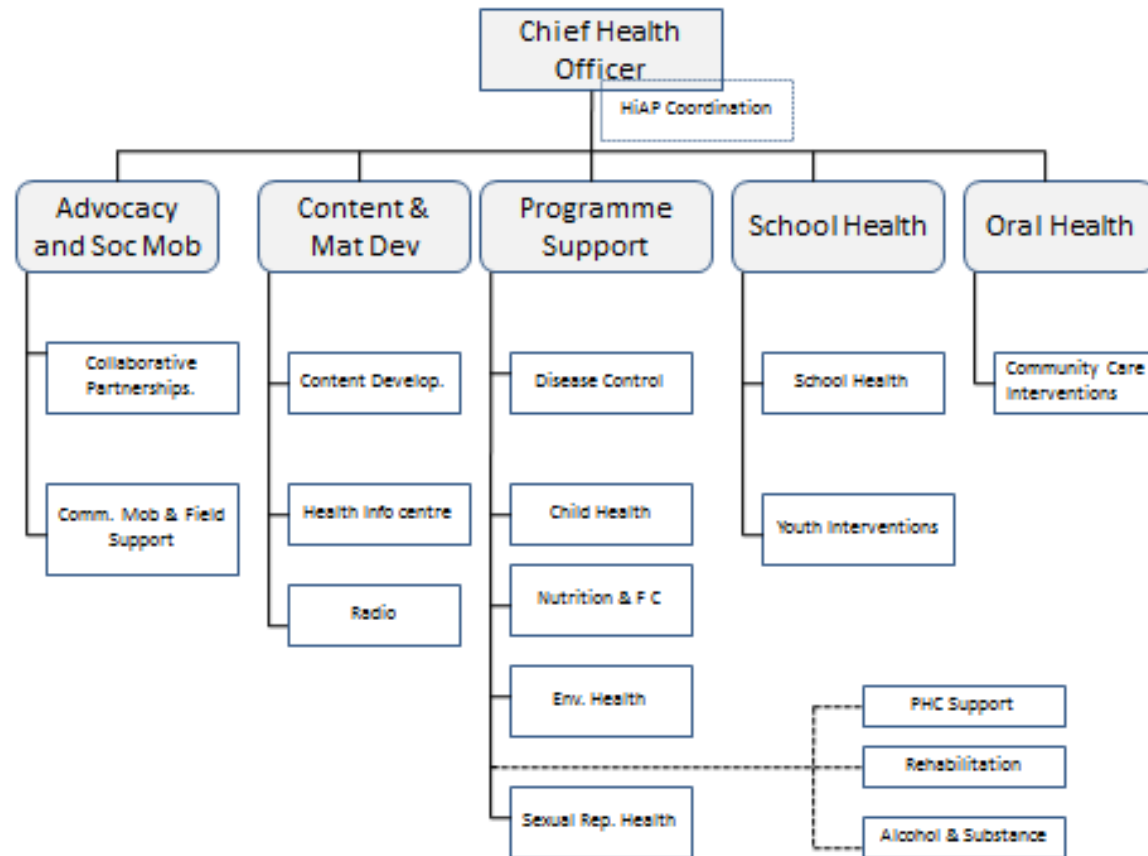
i. JOSEPH K WANGOMBE

Professor Joseph Wangombe is teaching at University of Nairobi. He holds bachelor degree in Economics and Sociology (1973), master degree in Economics (1977) and PhD in Health Economics (1985).

Professor Wangombe's research and trainer interests are Health care financing, Neglected Tropical Diseases, Health systems and Policy Development.



c. MINISTRY OF HEALTH BOTSWANA



i. SAMUEL KOLANE

Mr. Samuel Kolane is currently working as a Chief Health Officer, heading the Health Promotion and Education Division in Ministry of Health Botswana. His duties entail managing, supervising and coordinating effective planning, implementation and evaluation of the national Health Promotion and Education Division programs with responsibilities for advocacy and community mobilization, communications and media production, school health and youth interventions, oral health and Health in All Policies.

Mr. Kolane holds a Bachelor of Public Health degree majoring in Health Promotion from La Trobe University in Australia, a post graduate Diploma in Community Dental Health from University College London, and a Diploma in Dental Therapeutics from the Institute of Health Sciences Gaborone. The skills he has gained through my training and work experience include the ability to: plan and coordinate health promotion programs for community groups and stakeholders; provide preventive, promotive and curative oral health care to community groups; provide training to other health professionals and Institute of Health Sciences students in community health issues; design and develop public information campaigns using radio, television, newspapers, pamphlets, posters; carry out research on health issues.



5. WESTERN-PACIFIC

a. COMMUNITY AND PUBLIC HEALTH CANTERBURY DISTRICT HEALTH BOARD, NEW ZELAND

Determinants of Health Training

Two hour training



Two half days training



Broadly Speaking
about health and its determinants



Learning Outcomes

By the end of the programme participants will be able to

- describe those factors or 'broad determinants' that impact upon the health of individuals, communities and populations
- provide examples of actions that can address the causes of poor health and health inequalities
- identify potential barriers to and opportunities for action in a range of settings

Broadly Speaking
about health and its determinants



Objectives

This programme seeks to influence and support positive change across sectors and communities through enabling participants:

- to develop a greater understanding of those factors, beyond the health sector, that impact on the health of populations
- to build public health capacity and population health competency within District Health Boards, Primary Healthcare Organisations, Local Government, Māori and Non-Governmental Organisations, workforces, and communities
- to increase the capacity of communities to identify their own health needs and solutions in the context of understandings about the broader determinants of health

Broadly Speaking
about health and its determinants



Funded by
Canterbury District Health Board

- Is a professional development requirement for ALL public health staff. Now rolling out to wider Health Board beginning with orientation for newcomers.
- Part of the workforce development coordinators role and on the central staff workforce development site.

i. ANNA STEVENSON

Dr Anna Stevenson is a New Zealand trained Public Health Physician. Before training in public health she worked in family medicine in cities and rural locations around New Zealand and in Palestine. She has travelled extensively in the Pacific and South East Asia.

Dr Stevenson created a role spanning the local health board and the local council which she held for eight years. Dr Stevenson led the reorientation of the Canterbury District Health Boards Public Health Unit, Community and Public health, to an organisation committed to working in a Health in All Policies way with a clear focus on Determinants of health, Equity, sound use of Evidence and honouring the Treaty of Waitangi (DEET) in all our work. Currently she leads the Policy team at Community and Public Health.



b. PUBLIC HEALTH AND CLINICAL SYSTEMS, DEPARTMENT OF HEALTH AND AGEING ADELAIDE, SOUTH AUSTRALIA, AUSTRALIA

Health in All Policies

Training for HiAP action:

Snapshot of recent courses run by the South Australian team

The majority of recent training has emerged as a result of the South Australian HiAP Summer School held in 2011.

Health Diplomacy Masterclass (Adelaide)

- Focus on health diplomacy and negotiation
- Funded by the South Australian Department for Health and Ageing (DHA)
- Target audience – Public Health and Health Promotion practitioners and professionals within the DHA
- Guest presenter and facilitator – Prof Ilona Kickbusch



Health in All Policies

Training for HiAP action:

Snapshot of recent courses run by the South Australian team

Public Health Summer School (New Zealand)

- University of Otago – students undertaking Master's of Public Health
- Funded by Otago University and student fees
- Focus – how to apply HiAP

Public Health Association of Australia – Health Promotion Special Interest Group (Perth)

- Participants - Public Health and Health Promotion practitioners and professionals
- Funded by the Health Promotion Special Interest Group
- Focus - health diplomacy and negotiation
- One day workshop



Health in All Policies

Training for HiAP action:

Snapshot of recent courses run by the South Australian team

Collaboration and Policymaking Workshop (Adelaide)

- Engaged policymakers from across state government to discuss opportunities presented by the South Australian Public Health Act 2011
- Provided a forum to further progress joined-up policy making drawing on the principles, practices and processes of the South Australian HiAP approach
- Funded by the South Australian Department for Health and Ageing
- Participants – policymakers from across state government



Health in All Policies

Communication and Promotion of Training Courses

- Channels for Advertising
 - Professional networks
 - Use of government and non-government Listserv
 - Word of mouth
 - Targeted invitations
- Tools for communication to maintain momentum post training
 - Ongoing collaborative work
 - Ongoing interaction with colleagues and policymakers
 - Through the Public Health Association of Australia Health Promotion Special Interest Group
 - Newsletter
 - Informal gatherings



i. CARMEL WILLIAMS

Ms Carmel Williams is the Manager of the Strategic Partnerships Unit, South Australian Department for Health and Ageing, which continues the work of the former Health in All Policies Unit. Carmel has overseen the development, implementation and evaluation of South Australia's Health in All Policies approach, and the Health Lens Analysis projects.

Ms Williams has worked extensively with the World Health Organization, including the collaboration with WHO to develop the South Australian Health in All Policies Training Manual.

Moreover, she has extensive experience in the field of health promotion and public health and she is currently the Convenor of the Public Health Association of Australia Health Promotion Special Interest Group.

On her background in education, Ms. Carmel holds a Master of Public Health from the University of Adelaide.




c. NATIONAL HEALTH DEVELOPMENT RESEARCH CENTRE BEIJING, CHINA



China National Health Development Research Center


- China National Health Development Research Center(NHDRC) was first established in 1991 named as China Health Economics Institute (CHEI), which is a research institute at national level directly led by the Ministry of Health (MOH).
- There are 81 full-time researchers and >30 part-time and temporary staff.
- The mission is:
 - To conduct research on national health reform and health development strategy, participating in practice of health reform and development.
 - To conduct policy research on health development and reform and provide policy recommendations for policy-makers;
 - To conduct research and practice on health management.
 - To conduct research on health policy evaluation and technology assessment.
 - To conduct research on methodology of health economic and basic theories of health management .

<http://www.nhdrc.cn>




- Training course for the ability building for the local health system
- Health policy and techniques assessment training
- Local health authority officers and the managers of local hospitals, etc.
- Funded by WB and UK NICE.
- Published through the government website
- Our center established some projects such as clinic pathways and so on to help the local areas to enhance the ability.

<http://www.nhdrc.cn>



- Training course for the ability building for the local health authority officers
- This course is 3-year project, consisting of 6 terms per year.
- It's the task of the National Health and Family Planning Commission, funded by Merck Drugs & Biotechnology Ltd.
- Each term of the course has its specific themes, including how to put such policies into practice as the comprehensive reform of the primary health system, the equalization of basic public health services, the construction of the primary health system, etc.
- Also including some specific themes for the audiences: deal with the Medical disputes, payment reform, integrated the health insurance system in urban city and rural areas
- Published through the government website
- Our center is responsible for the routine supervision and some survey to monitor the changes of the local government.

<http://www.nhdrc.cn>



- Training course for the local Maternity and Child Care service providers
- Funded by National health and family planning commission, China
- It was informed through the government website
- Our center is responsible for the routine supervision and some survey to monitor the changes of the local government.

<http://www.nhdrc.cn>

i. HAO XIAONING

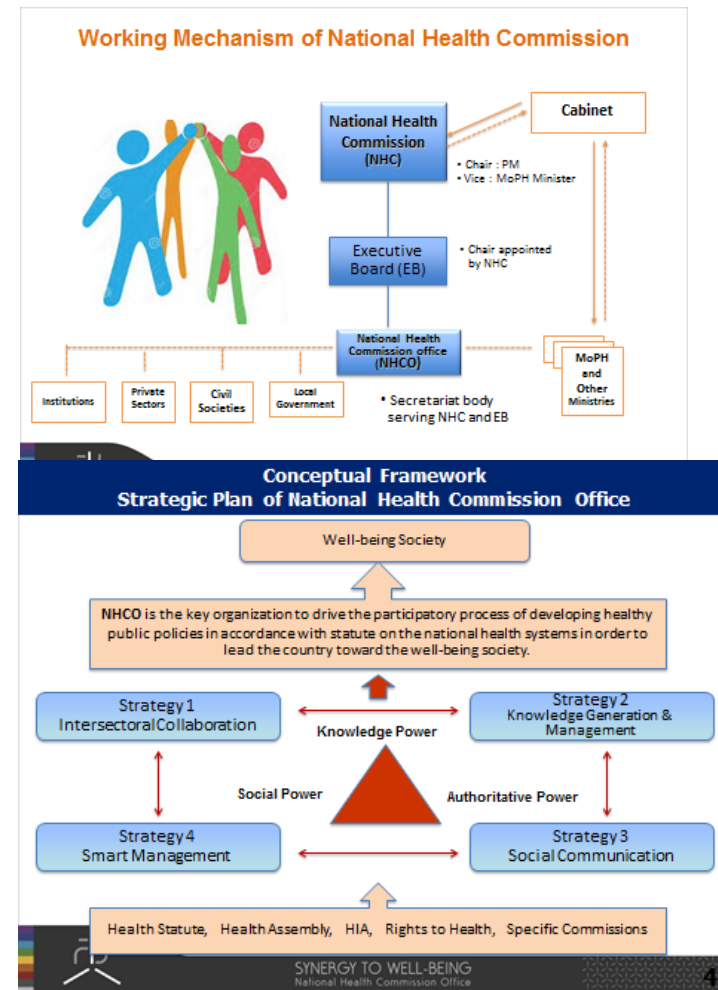
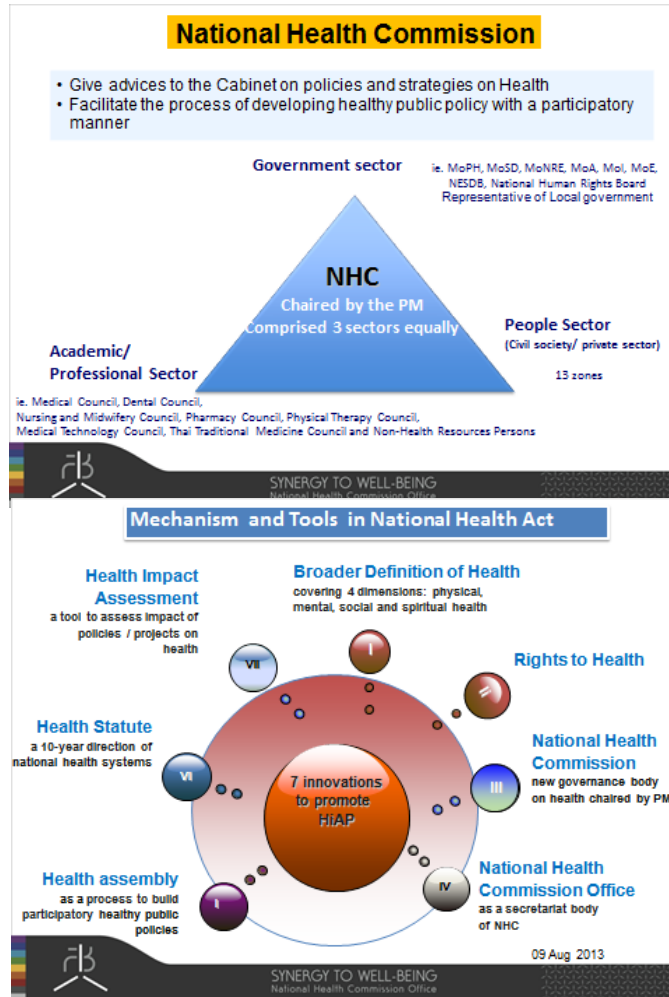
Ms. Hao Xiaoning is the associate professor and the director of division of the National health development research center of China since 2010. She got her Bachelor of Medicine in 1995 from Shandong Medical University, Master of Public Health in Toxicology in 2000, and PhD degree in Health Economics in 2007 from Shandong University. Before joining NHDRC of China, she did my post-doctoral research on public policy in School of Public Policy and Management of Tsinghua University during 2007-2010.

These years she mainly focused on such relative researches of health development and health policy, especially the ageing health and risk management. Ms. Xiaoning is also the consultant of National health and family planning commission in the health policy areas. China is now just ongoing the health system reform, and to make the health in all policy is very important and just on the right time.



6. SOUTH-EAST ASIA

a. NATIONAL HEALTH COMMISSION OFFICE, THAILAND

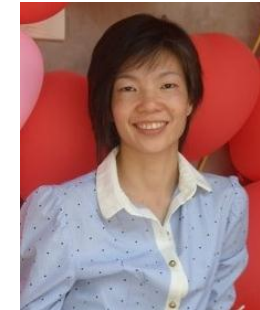


i. NANOOT MATHURAPOTE

Ms. Nanoot Mathurapote has been working at Thailand's National Health Commission Office (NHCO) since 2008. As a specialist on international relations, she is in charge of global partnership coordinating unit aiming to promote and share experience of Thailand in the aspect of health in all policies through the missions of National Health Commission namely Health Assembly, Statute on the National Health Systems and Health Impact Assessment to international partners. The eventual objective is to develop collaboration with international partners in order to contribute to global governance for health.

Despite of working in the health field, her education background is social anthropology from University of Kent, United Kingdom and mass communication at Chulalongkorn University, Thailand.

Before joining NHCO, she worked as the project coordinator for the 3rd Gross National Happiness Conference in Thailand in 2007 and as the programme assistant at United Nations Development Programme at Thailand country office from 2004 – 2006.



b. LAL BAHADUR SHASTRI NATIONAL ACADEMY OF ADMINISTRATION (LBSNAA), INDIA

Academy History

- National Academy of Administration formed in 1959 by merger of IAS Training School at Metcalfe House, Delhi and IAS Staff College, Simla
- Set up in the precincts of Charleville hotel at Mussoorie on September 1, 1959
- Named after late Prime Minister Lal Bahadur Shastri in 1972

Training Activities

- Induction Training for direct recruits – 2 years
 - Foundation Course
 - IAS Professional Course (Phase I)
 - District Training
 - IAS Professional Course (Phase II)
- Induction Training for promoted state civil service officers
- Mid Career Training Programme for IAS officers
 - Phase III (for 8-10 years seniority) – 8 weeks
 - Phase IV (for 15-18 years seniority) – 8 weeks
 - Phase V (for 28-30 years seniority) – 5 weeks
- In-service short-term training programmes
- Conferences, Seminars and Workshops

Mission Statement



We seek to promote good governance, by providing quality training towards building a professional and responsive civil service in a caring, ethical and transparent framework.

Health Sector Training

- All the officer's who pass out of the Academy hold very critical positions of the Health Administrators at the District, State and Federal Level.
- These officer's are involved in policy formulation and implementation in health sector and also involved in formulation and implementation of policies which have bearing on health indices.
- The training in health sector includes issues of implementation of various programs at grassroots level. The policy formulation in healthcare sector. Understanding the economics of healthcare sector. Inter-sectoral issues in providing healthcare. Use of PPP models in provision of tertiary health care.

i. PREM SINGH

Dr Prem Singh holds MBBS from JIPMER, Puducherry. During his career he worked as SDO Chandel; Director, Youth Affairs and Sports, Manipur; Deputy Commissioner, Senapati District; Secretary to CM and Director, Municipal Administration Housing and Urban Development. Also, he served as Director, Municipal Administration Housing and Urban Development, State Mission Director (NRHM) and State Project Director (SSA) before joining the Lal Bahadur Shastri National Academy of Administration, Mussoorie in February 2010.

Dr Singh has done Post Graduate Program in Public Management and Policy (PGP-PMP) from IIM, Ahemadabad. His areas of interest include applied economics of welfare state, service delivery in social sector (health, education).



c. NATIONAL HEALTH SYSTEM RESOURCE CENTER , NEW DELHI, INDIA

NHSRC Broad Objectives

- 1 • Respond to technical assistance needs of States and MOHFW
- 2 • Inputs to Policy and Strategy Development
- 3 • Coordination of technical assistance to MoHFW and States

NHSRC works in collaboration with MOHFW



NHSRC Health System Framework



**A SYSTEMS APPROACH
NHSRC: TEN DIVISIONS**



NHSRC's role in Health Systems Strengthening

- ▶ Supporting Program Implementation Plan for all 36 states
- ▶ Monitoring, Evaluation & Supportive Supervision
- ▶ Quality Assurance
- ▶ Capacity Development
- ▶ Health care financing (costing of health interventions)
- ▶ National Knowledge Platform
- ▶ National health Innovation Portal



i. SANJIV KUMAR

Dr Sanjiv Kumar has 38 years of experience in public health in 29 countries in Central and South Asia, Eastern and Southern Africa, Central Eastern Europe and in academics. He started his career as MO in Indian Army. Later he worked at PHCs in Haryana, urban slums in Delhi, and in UNICEF as health specialist at state and national level in India and then moved to international positions as Chief of Health, Nutrition, Child Survival & Development and Senior Advisor in Iraq, Kenya, Uganda and Somalia and Regional Advisor for 22 countries in Central Asia, Central and Eastern Europe. During this journey he worked in deserts of Rajasthan to Masai villages in Kenya, post conflict areas of northern Uganda, war zone in Cambodia, and domestic fish ponds in Bangladesh, firing lines in Iraq; militancy torn Somalia and former Soviet republics after collapse of communism and so on.

Dr Kumar has conducted strategic program reviews, planning, implementation, monitoring and evaluation of programs, capacity building of semi-literate village volunteers, health workers, program managers, senior faculty of medical, nursing and paramedic colleges, strategic planning and managing of health programs for UNICEF in many countries. In 2011, he came back to academics and developed and facilitated courses for government officials and NGOs in leadership and strategic management for mid and senior level health officials and supervised research projects for reputed national and international organizations.

His current interests are capacity building in leadership, strategic management team building for corporate sector, UN and health institutions. He currently heads National Health Systems Resource Centre that provides technical support to Ministry of Health and Family Welfare, state governments in India. He has published about 100 papers in scientific and popular magazines and chapters in books.

