

# **Post-COVID 19 Era: Inclusiveness is Critical to Prevent Social and Health Inequity**

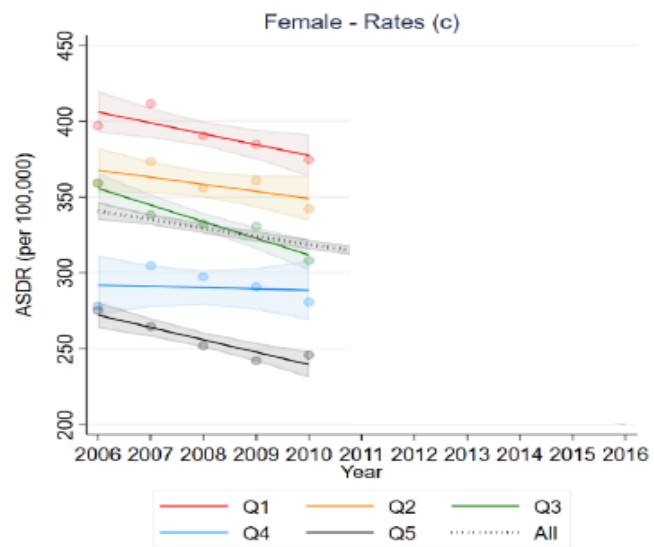
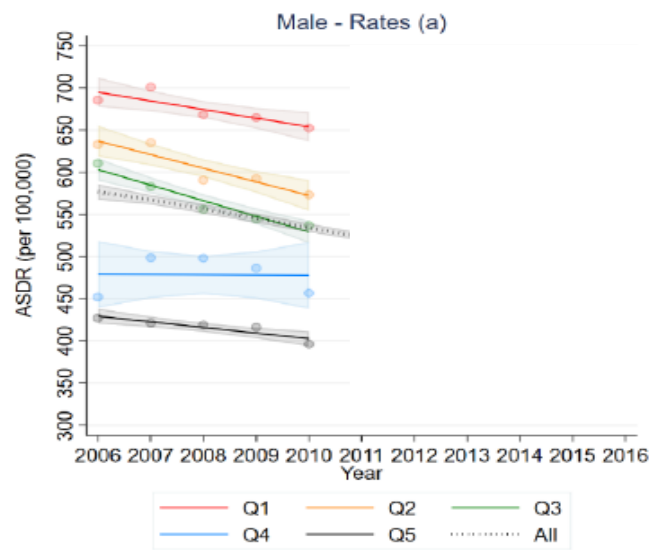
Professor Sharon Friel  
Menzies Centre for Health Governance  
School of Regulation and Global Governance (RegNet)  
Australian National University



AUSTRALIAN COVID-19 POLICY  
RESPONSES:  
GOOD FOR HEALTH EQUITY OR A MISSED  
OPPORTUNITY?

<http://regnet.anu.edu.au/sites/default/files/uploads/2020-08/2020%2008%2021%20MCHG-COVID19PoliciesHealthE.pdf>

# Age standardised death rates, 35-74 years



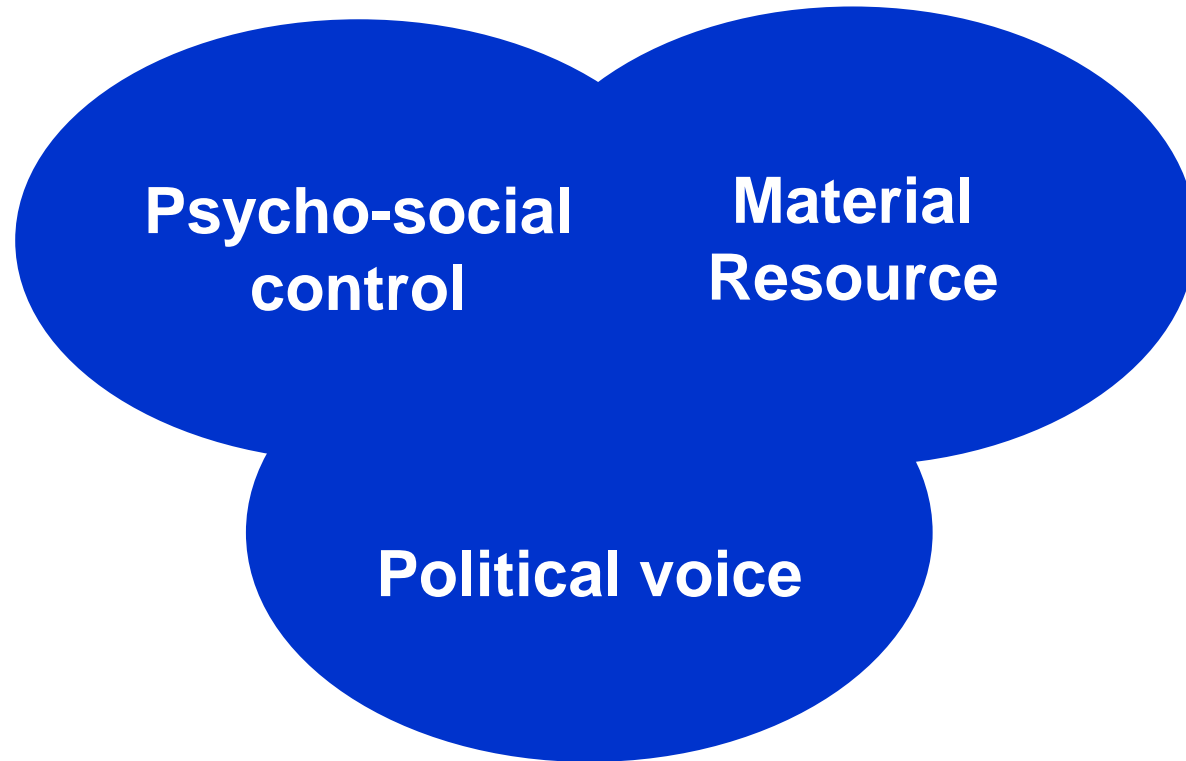


Michael Morgenstern

*“The rich will find their world to be more expensive, inconvenient, uncomfortable, disrupted and colourless – in general, more unpleasant and unpredictable, perhaps greatly so. The poor will die.”*

Smith 2008

**To live with dignity, prevent poor health, and with the lightest of environmental touches, people need...**



**...requires action beyond the health sector**

# COVID-19 Australian policy responses (12 March to 16 June 2020)

	<b>FED</b>	<b>NSW</b>	<b>ACT</b>	<b>VIC</b>	<b>SA</b>	<b>WA</b>	<b>NT</b>	<b>QLD</b>	<b>TAS</b>
<b>Employment</b>	7	5	7	5	6	3	3	8	6
<b>Income</b>	5	1	2	1	1	0	0	0	2
<b>Cost of living</b>	1	1	1	0	0	2	1	1	1
<b>Childcare &amp; Education</b>	3	2	2	0	1	2	0	1	3
<b>Housing</b>	1	4	3	5	2	3	1	6	5
<b>Infrastructure</b>	4	2	1	0	0	0	2	0	2
<b>Community</b>	5	3	3	3	0	3	0	2	3
<b>Health care</b>	2	1	1	1	0	1	0	1	2
<i>Total (156)</i>	<i>28</i>	<i>19</i>	<i>20</i>	<i>15</i>	<i>10</i>	<i>14</i>	<i>7</i>	<i>19</i>	<i>24</i>

# Income security

## Before COVID

- Poverty (14%), growing income inequality, and high levels of precarious employment

## COVID responses

- **JobKeeper** wage subsidy
- An additional \$550 per fortnight to people on income support schemes

# Child care

## Before COVID

- 44% Australian children experiencing disadvantage were assessed to be developmentally vulnerable on entering school at age five.

## COVID responses

- *Early Childhood Education & Care Relief Package* - weekly subsidy to childcare services to continue to deliver early childhood education and care. Families were able to access childcare for free during this period
- Nothing for primary or secondary schools

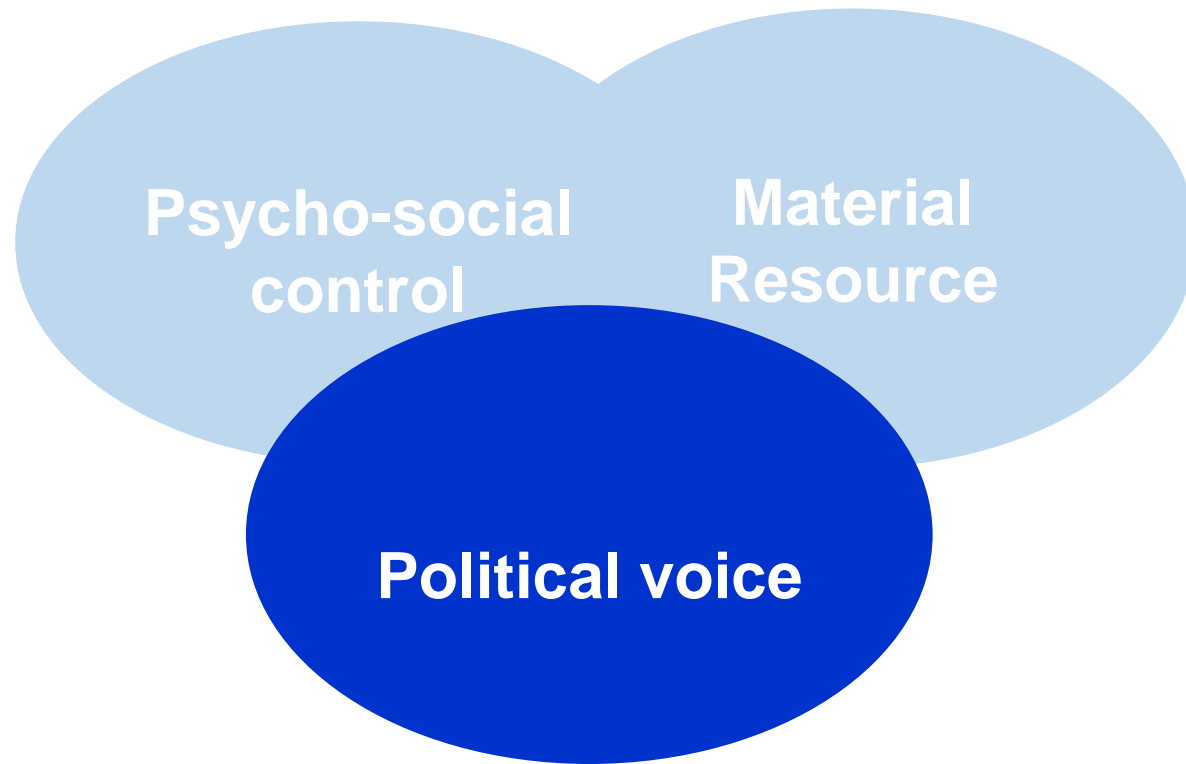


# Housing

*“You cant stay home if you don't have one. And you can't wash your hands and protect yourself if you don't have access to soap and water. This pandemic has laid bare some of the deepest inequalities in our society – not least the need for secure housing.”*

*Daniel Andrews Premier of Victoria, 29<sup>th</sup> July 2020*

**To live with dignity, prevent poor health, and with the lightest of environmental touches, people need...**



Understand the problem  
from the perspective of  
the people who  
experience it

Explore the causes that  
shape that experience

People who experience  
the problem play a role  
in shaping the solutions

Increased demand for  
action

Policy that beneficiaries  
buy into

Policy designed to take  
into account lived  
realities

Increased political  
accountability

**Policy more likely to  
work**

**Please send any questions to:**

[Sharon.friel@anu.edu.au](mailto:Sharon.friel@anu.edu.au)

@SharonFrielOz